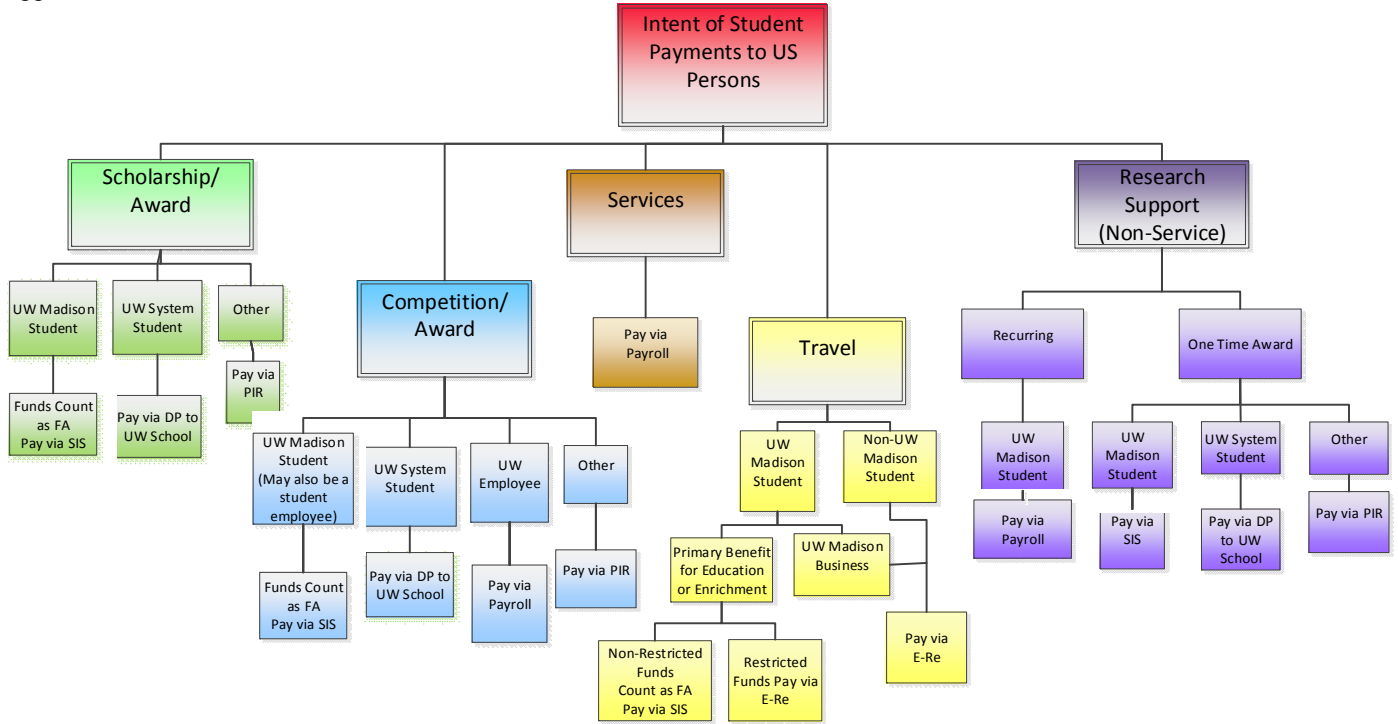


# PAYMENTS TO STUDENTS

See appendix A



Flowchart above does not show full details of appropriate payment methods. Please refer to the specific payment section in this guide for more details.  
 Note: Stipend is a generic term used across campus to denote various types of payments. The purpose of the payment identifies the payment method.

- Scholarship/Award**
  - \* Primary purpose is to assist with costs incurred during student’s pursuit of their degree, training or research
  - \* Not associated with past, present or future services (No employer/employee relationship)
  - \* Typically paid in advance
- Competition/Award**
  - \* Recognizes achievements and may include results of a judged competition or merit
  - \* Could be open to the public
  - \* Process as a scholarship for UW-Madison students
- Services**
  - \* For teaching, research, peer counseling, etc. – supports UW-Madison’s mission
  - \* UW-Madison has direction or supervision over the individual.
  - \* The individual has a defined workweek and/or schedule.
  - \* Receipt of the funding is contingent on performance of services
- Travel**
  - \* Accountable plan – UW-Madison Business: Use E-Re if the student is representing UW-Madison
  - \* When student primarily benefits, funds provided are scholarship/fellowship regardless of intent and must be accounted for in the SIS. Federal aid recipients may be limited.
- Research Support**
  - \* Often paid on a monthly basis
  - \* Payments in support of research related activities - i.e. Summer Research Projects
  - \* REUs (Research Experiences for Undergraduates)
  - \* NSF Stipends